

SỞ GIÁO DỤC VÀ ĐÀO TẠO TP.HCM



JULY 2021
IELTS MOCK TEST
by
THÀNH MỸ CENTER



www.trungtamthanhmy.com

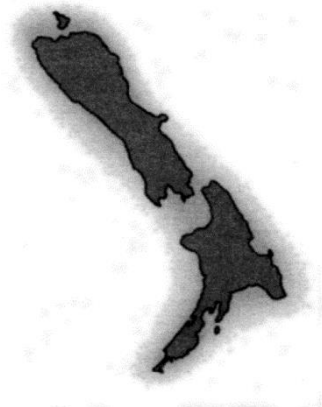
SECTION 1 Questions 1–10

Questions 1–3 Choose **THREE** letters **B–H**.

Which **THREE** other activities does the customer want to do?

Example A visit family

- B** save money
- C** study geography
- D** study English
- E** do some winter sports
- F** go sailing
- G** join a walking tour
- H** meet young people



Questions 4–7 Complete the form below.

Write **NO MORE THAN THREE WORDS AND/OR A NUMBER** for each answer.

CUSTOMER'S DETAILS	
Name	<i>SU Ming Lee</i>
Address	4 Kew
Mobile	5 0402
Day and date of departure	6
Length of course	7
Method of payment	<i>credit card</i>

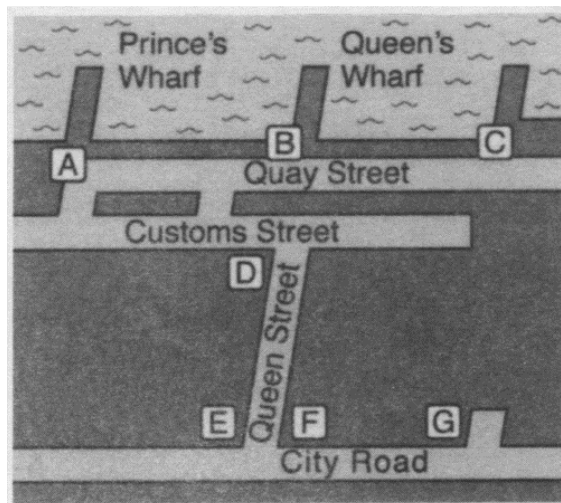
Questions 8–10 Label the map opposite.

Write the correct letter **A–G** next to questions 8–10.

8 The language school is at

9 The hotel is at

10 The bookshop is at



SECTION 2 Questions 11–20

Questions 11-13 Complete the sentences below.

Write **NO MORE THAN THREE WORDS** for each answer.

11 are often known by their famous bridges.

12 The speaker compares a bridge to a cathedral or

13 Sydney Harbour Bridge is nicknamed

Questions 14-18 Complete the table below.

Write **NO MORE THAN THREE WORDS AND/OR A NUMBER** for each answer.

Date	Event
1916	14 agreed to finance bridge
15	Contract signal with engineering firm
1926	Construction involved: <ul style="list-style-type: none"> • Knocking down 16 • creation of many jobs
1932	Bridge completed at a cost of 17 £
March 1932	Opening ceremony Ribbon cut by a man riding a 18

Questions 19-20 Complete the questions below.

Write **NO MORE THAN THREE WORDS AND/OR A NUMBER** for each answer.

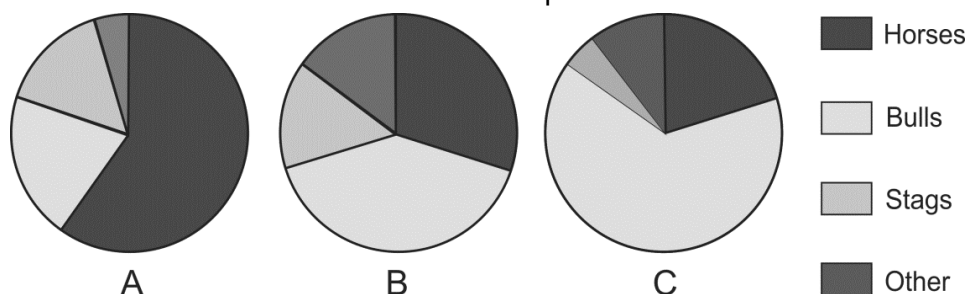
19 How long is the tunnel?

20 Name **ONE** thing the tunnel can withstand.

SECTION 3 Questions 21–30

Question 21 Choose the correct letter **A, B** or **C**.

21 Which graph shows the distribution of animals painted on the caves?



Questions 22-25 How does the woman describe each type of drawing?

Choose your answers from the box and write the letters **A-H** next to questions 22-25.

A uncommon	E consisting of dots
B realistic	F complex
C two-dimensional	G important
D childish	H huge

22 bulls

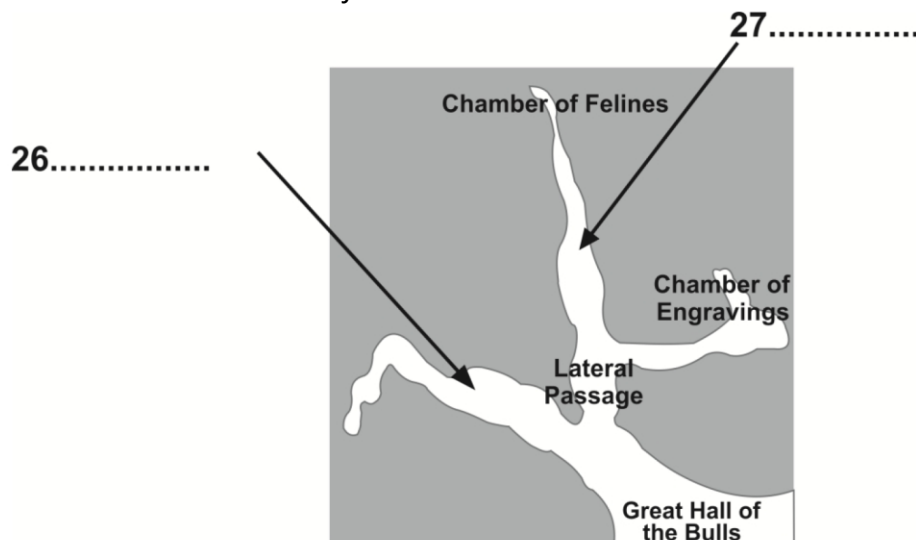
23 humans

24 signs

25 fish

Questions 26-27 Label the diagram below.

Write **NO MORE THAN THREE WORDS** for each answer.



Questions 28-30 Choose the correct letter **A**, **B** or **C**.

- 28** The cave was closed in 1963 because
- A** the tourists had drawn pictures on the walls.
 - B** the air was harming the rock art.
 - C** so few people were visiting the site.
- 29** How does David feel about the closure of the cave?
- A** He agrees with the decision.
 - B** He thinks it was a bad idea.
 - C** He has no views on the matter.
- 30** How can people enjoy the drawings today?
- A** The government has re-opened the cave.
 - B** The drawings have been photographed.
 - C** A replica of the cave has been built.

SECTION 4 Questions 31-40

Questions 31- 32 Complete the notes below.

Write **NO MORE THAN THREE WORDS** for each answer.

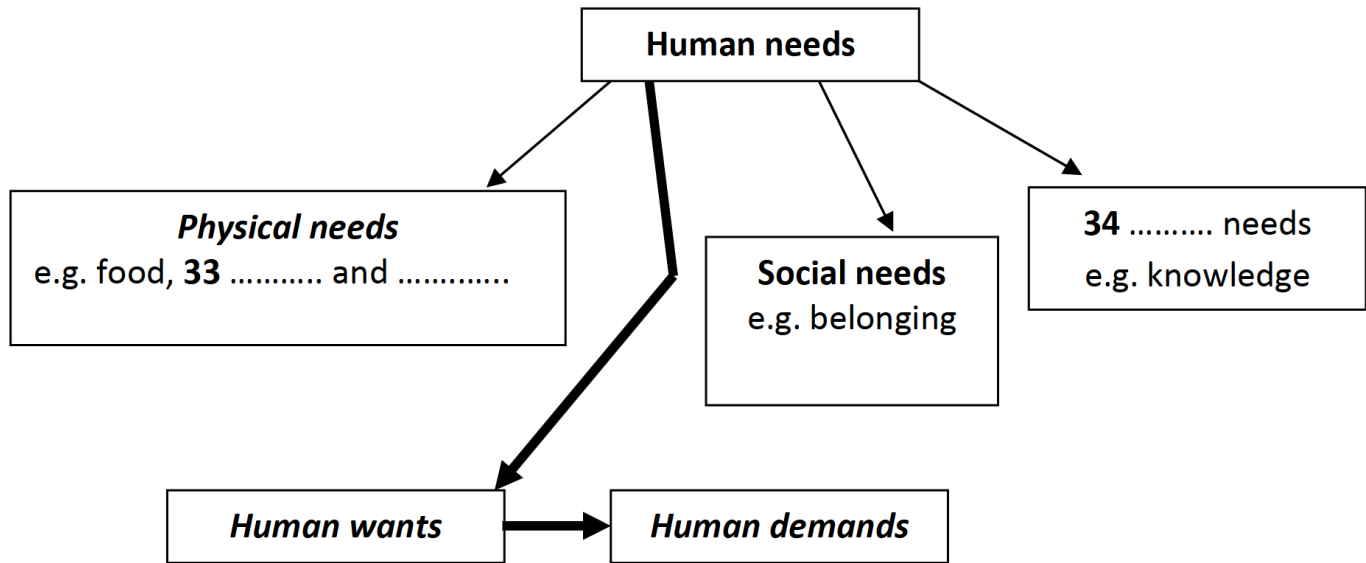
What is marketing?

31 and represent only two aspects of marketing.

Marketing involves:

- finding customers
- ensuring customer satisfaction
- **32**

Questions 33-34 Complete the flow chart below.
Write **NO MORE THAN TWO WORDS** for each answer.



Questions 35-38 Which market research method is used by each of these businesses?
Write the correct letter **A-C** next to questions 35-38.

- 35 supermarkets
- 36 department stores
- 37 fast-food companies
- 38 theme parks

- | | |
|----------|----------------------|
| A | customer observation |
| B | free offers |
| C | in-store surveys |

Questions 39-40 Complete the notes below.
Write **NO MORE THAN THREE WORDS** for each answer.

Customer satisfaction

Product performance	Customers are
• poor	• unhappy
• good	• 39
• 40	• delighted